

Plant list for farm dams, rivers and creeks in North West NSW

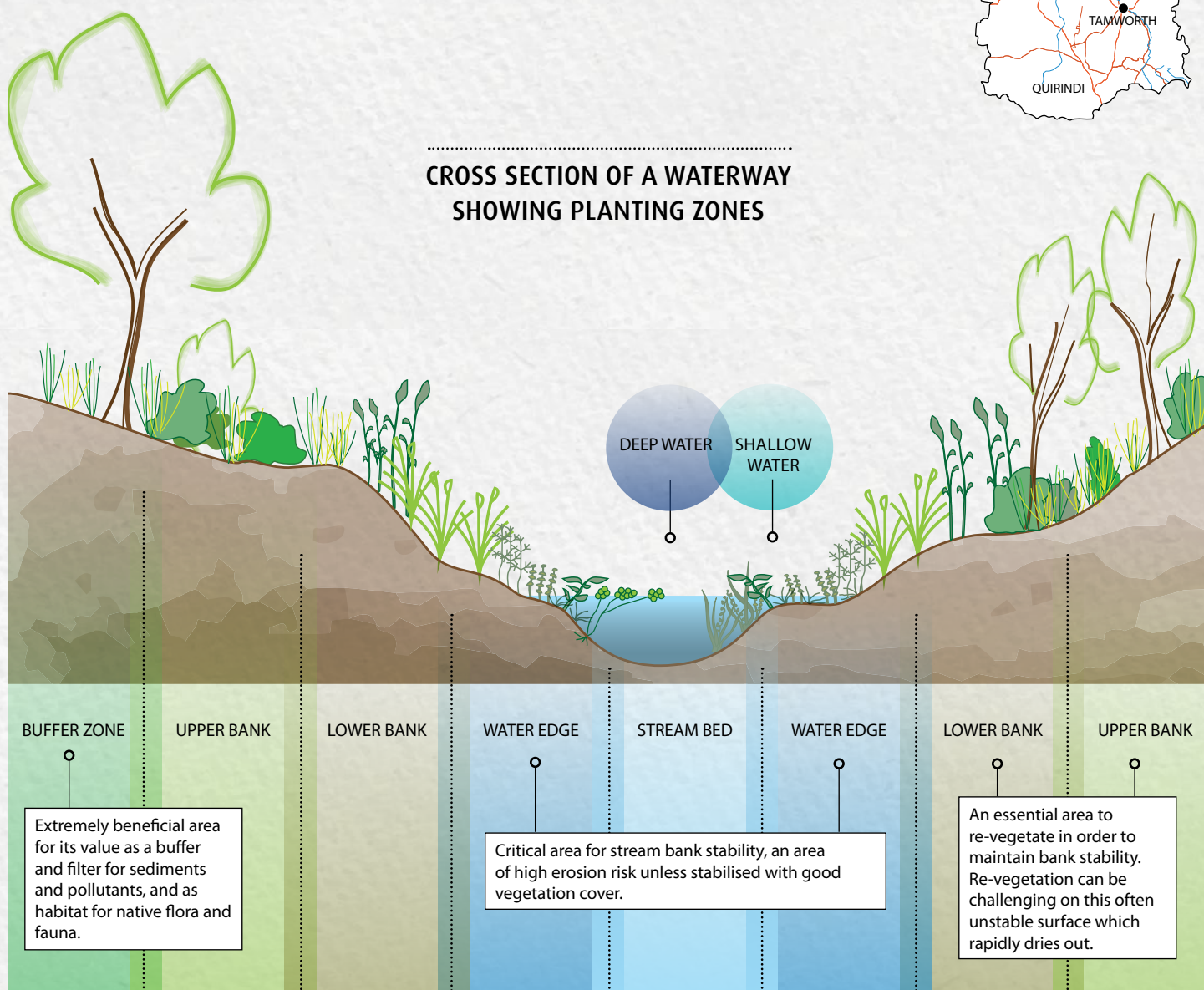
Native vegetation in and around waterways has many benefits for water quality, farm productivity and biodiversity. This list provides guidance on the types of plants suitable for revegetating dams, creeks and rivers.

Go local

Some of the plants are generally available at native plant nurseries - go for those that are locally sourced or propagated wherever possible. Draw on the expertise of people in your local Landcare group for more information on shrubs and trees native to your region and propagating local species.



CROSS SECTION OF A WATERWAY SHOWING PLANTING ZONES



DEEP WATER

SHALLOW WATER

BUFFER ZONE

UPPER BANK

LOWER BANK

WATER EDGE

STREAM BED

WATER EDGE

LOWER BANK

UPPER BANK

Extremely beneficial area for its value as a buffer and filter for sediments and pollutants, and as habitat for native flora and fauna.

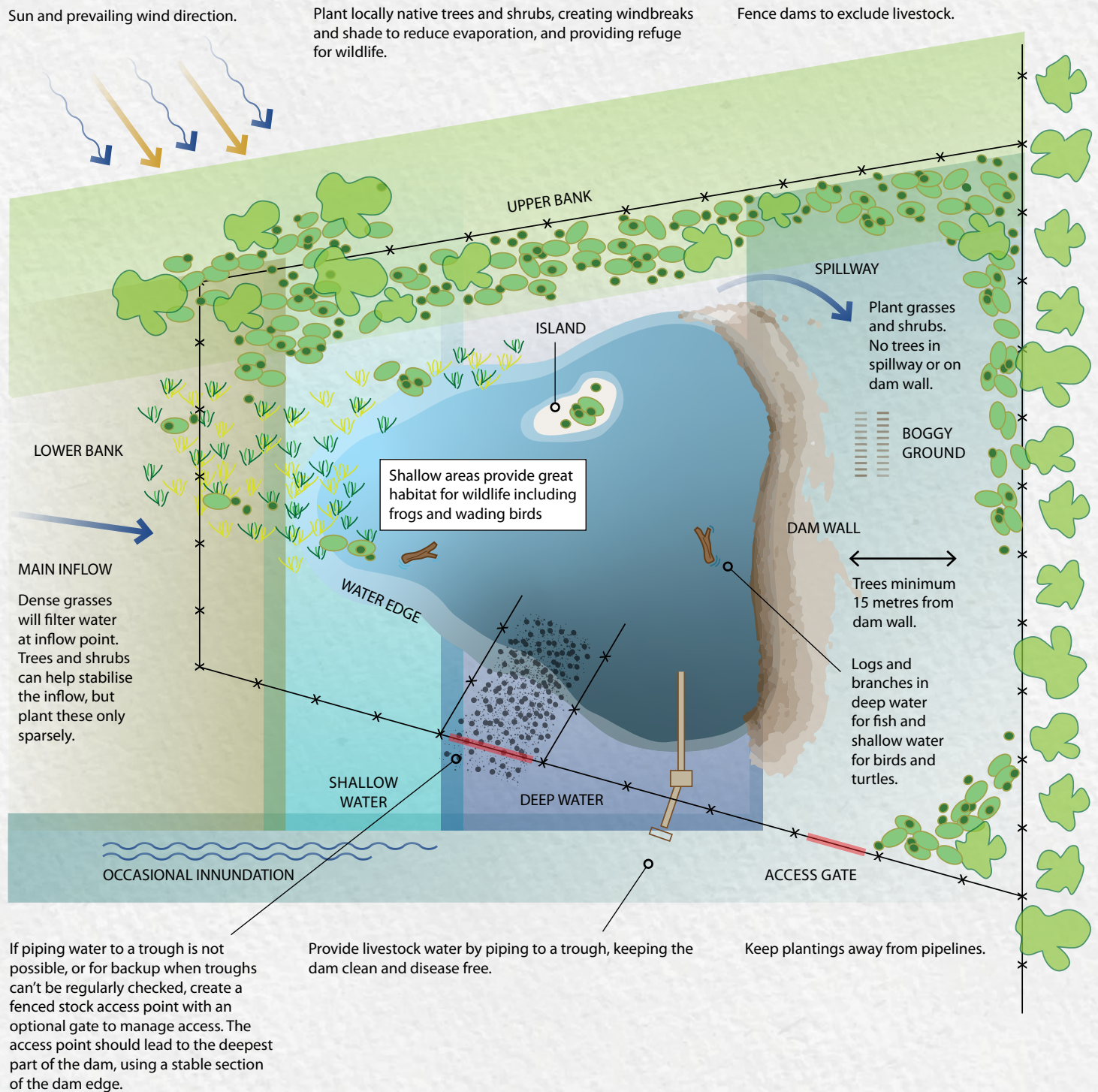
Critical area for stream bank stability, an area of high erosion risk unless stabilised with good vegetation cover.

An essential area to re-vegetate in order to maintain bank stability. Re-vegetation can be challenging on this often unstable surface which rapidly dries out.

Plant list for farm dams, rivers and creeks in North West NSW

<div><div>How to use this list</div><div>This list is a guide to common plants suitable for the different zones of a waterway – deep water, shallow water, waters edge, low bank and high bank. Planting a few different species from each zone and overlapping the zones is the best strategy for a healthy waterway.</div></div>				SEED & NURSERY AVAILABILITY	PLANTING ZONE						PROPOGATION	PROPOGATION S = Seed SH = Hotwater treatment (cover seeds with boiling water, allow to cool and then soak overnight) D = Division C = Cuttings
BOTANICAL NAME	COMMON NAME	FORM	AREA		SUBMERGENT (DEEP WATER)	EMERGENT (SHALLOW WATER)	WATERS EDGE	LOWER BANK	UPPER BANK	SWAMPY INUNDATION		TRADITIONAL USE
<i>Azolla filliculoides</i>	Azolla fern	FERN	ALL	HIGH	●	●	●				D	
<i>Marsilea sp</i>	Nardoo	FERN	SLOPES & NW PLAINS	MED	●	●				●	S, D	SEED USED FOR BREAD MAKING
<i>Rumex species</i>	Dock	FORB	ALL	MED			●	●	●	●	S	EDIBLE LEAVES
<i>Persicaria species</i>	Knot Weeds	FORB	SLOPES & NW PLAINS	MED			●	●		●	S, C	
<i>Potamogeton sp</i>	Pondweeds	FORB	ALL	MED	●	●					S, D	
<i>Lobelia concolor</i>	Prattia	FORB	ALL	HIGH				●	●	●		
<i>Myriophyllum sp</i>	Water Milfoils	FORB	ALL	HIGH	●	●	●				S, D	
<i>Nymphoides crenata</i>	Wavy marshwort	FORB	SLOPES & NW PLAINS	LOW	●	●					S, D	
<i>Phragmites australia</i>	Common reed	REED	ALL	HIGH		●	●	●		●	S, D	STEMS USED AS SPEARS
<i>Typha domingensis</i>	Narrow-leaved cumbingi	REED	ALL	LOW		●	●			●	S, D	EDIBLE UNDERGROUND STEMS/ WEAVING
<i>Bolboschoenus fluviatilis</i>	Marsh club-rush	RUSH	ALL	HIGH			●	●		●	S, D	WEAVING
<i>Juncus species</i>	Pin Rush	RUSH	ALL	HIGH		●	●	●		●	S, D	WEAVING
<i>Schoenoplectus validus</i>	River club-rush	RUSH	ALL	LOW		●	●	●		●	S, D	WEAVING
<i>Lomandra longifolia</i>	Spiny-headed mat rushes	RUSH	ALL	HIGH			●	●	●	●	S, D	SEED USED FOR BREAD MAKING/ WEAVING
<i>Cyperus exaltatus</i>	Giant sedge	SEDGE	ALL	HIGH			●	●		●	S, D	
<i>Eleocharis species</i>	Sedges	SEDGE	ALL	LOW		●	●			●	S, D	
<i>Carex appressa</i>	Tall sedge	SEDGE	ALL	HIGH			●	●		●	S, D	
<i>Cyperus vaginatus</i>	Tall umbrella sedge	SEDGE	HIGH COUNTRY & SLOPES	LOW						●	S, D	
<i>Cymbopogon refractus</i>	Barbed wire grass	GRASS	ALL	MED					●		S, D	SEED USED FOR BREAD MAKING
<i>Cynodon dactylon</i>	Couch Grass	GRASS	ALL	HIGH		●	●	●	●	●	S, D	
<i>Themeda australis</i>	Kangaroo grass	GRASS	ALL	HIGH					●		S, D	SEED USED FOR BREAD MAKING
<i>Dichanthium sericeum</i>	Queensland bluegrass	GRASS	ALL	MED					●		S, D	SEED USED FOR BREAD MAKING
<i>Bothriochloa decipiens</i>	Red grasses	GRASS	ALL	MED					●		S	SEED USED FOR BREAD MAKING
<i>Arundinella nepalensis</i>	Reed Grass	GRASS	ALL	LOW			●	●			S, D	
<i>Austrostipa verticillata</i>	Slender bamboo grass	GRASS	ALL	HIGH				●	●		S, D	
<i>Poa labillardieri</i>	Tussock grass	GRASS	ALL	HIGH				●	●		S, D	
<i>Rytidosperma species</i>	Wallaby grasses	GRASS	ALL	MED					●		S	
<i>Paspalum distichum</i>	Water couch	GRASS	ALL	HIGH				●		●	S, D	
<i>Microlaena stipoides</i>	Weeping grass	GRASS	HIGH COUNTRY & SLOPES	MED					●		S	SEED USED FOR BREAD MAKING
<i>Dichondra repens</i>	Kidney Weed	HERB	ALL	MED				●	●		S, D	
<i>Alternanthera denticulata</i>	Lesser Joy Weed	HERB	ALL	LOW					●		S, C	
<i>Einadia nutans</i>	Climbing Saltbush	PROSTRATE FORB	ALL	MED				●	●		S, C	EDIBLE LEAVES
<i>Oplismenus imbecillis</i>	Oplismenus	PROSTRATE FORB	HIGH COUNTRY CREEKS & RIVERS	MED				●	●	●	S, D	
<i>Tetragonia tetragonioides</i>	Warrigal Greens	PROSTRATE FORB	NW PLAINS	HIGH				●		●	S, C	EDIBLE LEAVES
<i>Atriplex semibaccata</i>	Berry Saltush	SHRUB	SLOPES & NW PLAINS	MED					●		S, C	EDIBLE LEAVES
<i>Melaleuca bracteata</i>	Creek paperbark	SHRUB	SLOPES & NW PLAINS	HIGH			●	●		●	S	MEDICINAL
<i>Acacia melanoxylon</i>	Blackwood	SMALL TREE	HIGH COUNTRY & SLOPES	HIGH					●		SH	EDIBLE SEED
<i>Acacia pendula</i>	Boree	SMALL TREE	SLOPES & NW PLAINS	HIGH					●		SH	TOOL MAKING
<i>Acacia salicina</i>	Cooba	SMALL TREE	ALL	HIGH					●		SH	
<i>Acacia implexa</i>	Hickory wattle	SMALL TREE	HIGH COUNTRY & SLOPES	HIGH				●	●		SH	EDIBLE SEED
<i>Alstonia constricta</i>	Quinine/Bitter Bark	SMALL TREE	ALL	MED				●	●		S	MEDICINAL
<i>Alphitonia excels</i>	Red Ash	SMALL TREE	SLOPES & HIGH COUNTRY	HIGH					●		S	SOAP MAKING/ FISH STUNNING
<i>Acacia stenophylla</i>	River Cooba	SMALL TREE	SLOPES & NW PLAINS	HIGH			●	●	●		SH	EDIBLE SEED
<i>Callestemon viminalis</i>	Weeping Bottlebrush	SMALL TREE	ALL	HIGH						●	S, C	TOOL MAKING
<i>Alectryon oleifolius</i>	Western rosewood	SMALL TREE	ALL	MED					●		S	
<i>Geijera parviflora</i>	Wilga	SMALL TREE	SLOPES & NW PLAINS	MED					●		S	SMOKING CEREMONIAL
<i>Bursaria spinosa</i>	Blackthorn	TALL SHRUB	ALL	HIGH					●		S	
<i>Acacia filicifolia</i>	Fernleaved wattle	TALL SHRUB	HIGH COUNTRY CREEKS & RIVERS	HIGH					●		SH	
<i>Callistemon sieberi</i>	River bottlebrush	TALL SHRUB	ALL	MED			●	●			S	TOOL MAKING
<i>Acacia dealbata</i>	Silver wattle	TALL SHRUB	HIGH COUNTRY CREEKS & RIVERS	HIGH					●		SH	
<i>Leptospermum brevipes</i>	Slender Tea-tree	TALL SHRUB	HIGH COUNTRY CREEKS & RIVERS	HIGH			●	●		●	S	MEDICINAL
<i>Leptospermum polygalifolium</i>	Tea tree	TALL SHRUB	HIGH COUNTRY CREEKS & RIVERS	HIGH			●	●		●	S	MEDICINAL
<i>Casuarina cristata</i>	Belah	TREE	SLOPES & NW PLAINS	HIGH				●	●	●	S	SPEAR MAKING
<i>Eucalyptus populnea</i>	Bimble Box	TREE	SLOPES & PLAINS	HIGH				●	●	●		
<i>Corymbia tessellaris</i>	Carbeen/ Tessellated Gum	TREE	NW PLAINS	HIGH					●		S	
<i>Eucalyptus coolabah</i>	Coolibah	TREE	NW PLAINS	MED					●	●	S	
<i>Brachychiton populneus</i>	Kurrajong	TREE	ALL	HIGH					●		S	SEED USED FOR BREAD MAKING/ STRING AND ROPE MAKING
<i>Eucalyptus viminalis</i>	Ribbon gum	TREE	HIGH COUNTRY CREEKS & RIVERS	HIGH					●		S	
<i>Casuarina cunninghnamiana</i>	River oak	TREE	ALL	HIGH			●	●		●	S	
<i>Eucalyptus camaldulensis</i>	River red gum	TREE	ALL	HIGH			●	●	●		S	
<i>Angophora floribunda</i>	Rough-barked apple	TREE	HIGH COUNTRY & SLOPES	HIGH					●		S	
<i>Eucalyptus melliodora</i>	Yellow box	TREE	HIGH COUNTRY & SLOPES	HIGH					●		S	

PLAN OF A FARM DAM SHOWING KEY FEATURES



Plan for success

STEP 1: Control woody weeds.

STEP 2: Fence to manage stock, and pest animals if necessary.

STEP 3: Establish grasses, sedges and rushes at the water's edge and lower bank zones at high density (4-5 plants per square meter).

STEP 4: Establish high banks, understory, shrubs and trees.

STEP 5: Talk to other Landcarers about what works.

STEP 6: Follow-up weeding and maintenance will be required in the early years, and probably watering depending on the season. Only take on as much as you can handle.